



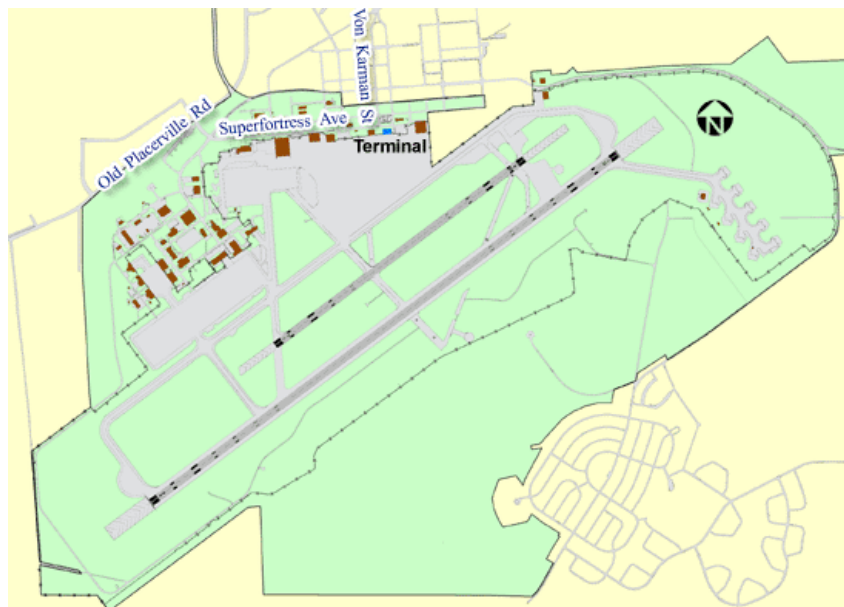
SIXTH ANNUAL  
**CALIFORNIA CAPITAL AIRSHOW**  
MATHER AIRPORT • SEPTEMBER 10-11, 2011

## **Mather Airport (MHR)**

Mather Airport, located twelve miles east of Sacramento and along the Highway 50 corridor, is cargo aviation focused with some general aviation operations. Its role is to accommodate the majority of the region's commercial air cargo operations.

### Features:

- Two parallel runways
  - One runway is 11,301 feet long, capable of handling the largest fully loaded craft
- 40 acres of cargo ramp space
- 321,000 square feet of warehouse space
- 198,000 square feet of office space
- Hangar space and tie-downs available
- Formerly Mather Air Force Base
- 2,875 acres
- Major air cargo carriers:
  - DHL
  - UPS
- Over 40 tenants



<http://www.sacairports.org/mather/>